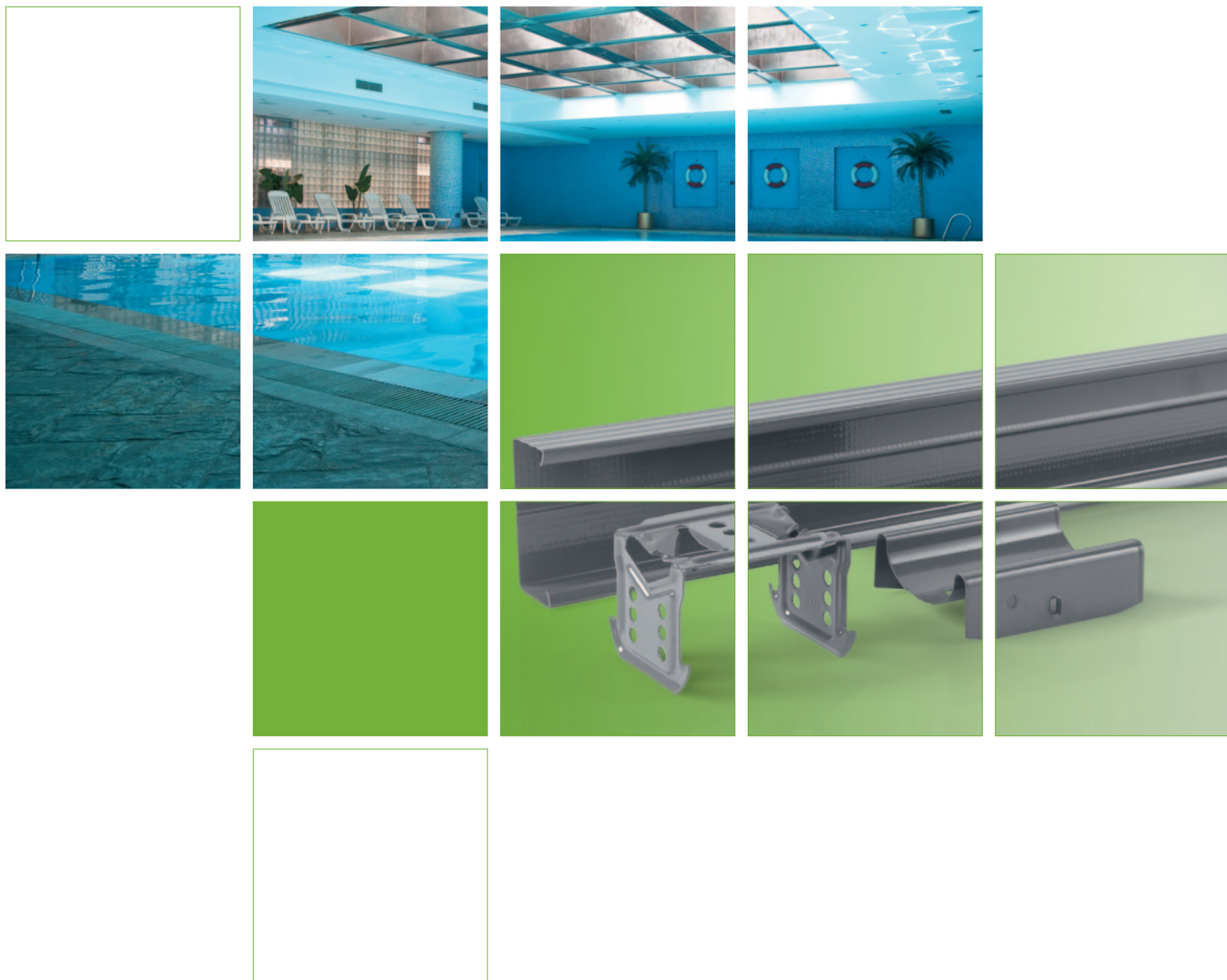


## CORROSION RESISTANT SUBSTRUCTURES FOR CEILINGS AND PARTITION WALLS



PROFILES  
FOR MODERN  
BUILDING

## Substructure materials with additional corrosion protection

Nowadays long-term, highly resistant protection against corrosion is a basic prerequisite for the high-quality production of dry-lining metal substructures. It guarantees the durability of the construction over a long period.

Current standards now prescribe minimum values for steel quality and thickness of galvanisation for the individual components of a construction. These minimum requirements suffice for the normal demands made of a dry-lining construction used in walls, furring, ceilings and cladding, under normal climatic conditions.

Where more onerous requirements exist, the norms impose mandatory additional coatings. Protektor supplies two corrosion resistant product lines for suspended ceilings. These are suitable for use, e.g.:

- above indoor swimming pools with a chlorine-charged atmosphere
- in damp indoor areas
- in areas with a continuous inflow of air from outdoors
- outdoors, and many other places

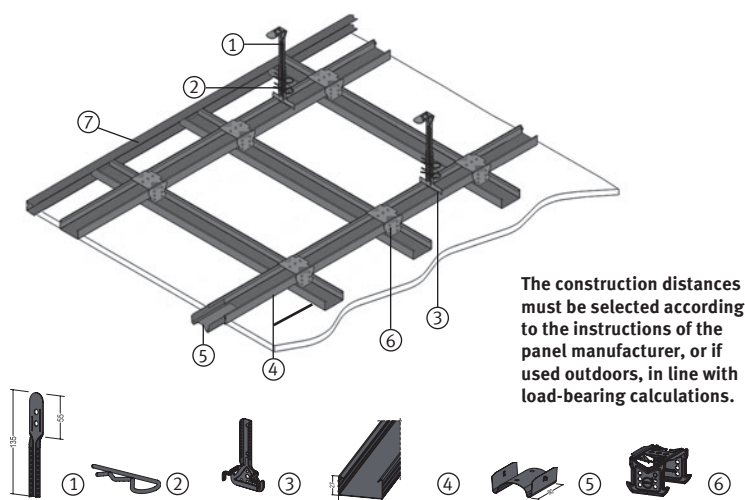
In order to be able to guarantee the necessary security, the additional anti-corrosion layers are applied to the individual products during manufacture, to DIN 18168-1 and DIN EN 13964 standards. The quality of the special coatings has been tested and confirmed.

In addition to well as the product ranges listed or described below, we are also able to supply other products for use in ceilings, walls and furrings on demand.

## CORROSION RESISTANT C3 CEILING SUB-STRUCTURES

### PD 300

for use in areas defined in DIN 13964 (Table 7 and 8, Class C) and DIN EN ISO 12944-6 corrosion category C3



Number	Item Code	Description	Material thickness (mm)	Length (mm)	Packaging unit	Requirements per m <sup>2</sup> for ceiling weight		
						≤ 0,15 kN/m <sup>2</sup>	≤ 0,30 kN/m <sup>2</sup>	≤ 0,50 kN/m <sup>2</sup>
④	58102	C-ceiling profile / basic profile 60-06	0,60	4000	32 m	2,90 m	3,20 m	3,80 m
⑤	58103	Straight connector	0,60	110	100 pieces	0,60 pieces	0,75 pieces	0,80 pieces
⑥	58104	Quick cross-connector	0,80	64,5	100 pieces	1,75 pieces	2,30 pieces	3,30 pieces
②	58107	Nonius safety clamp	2,50	60	100 pieces	2,00 pieces	3,00 pieces	4,00 pieces
③	58108	Nonius hanger	1,25	122	100 pieces	1,00 pieces	1,50 pieces	2,00 pieces
①	58109	Nonius adjusting strip	1,00	135	100 pieces	1,00 pieces	1,50 pieces	2,00 pieces
	58110	Nonius adjusting strip	1,00	200	100 pieces	1,00 pieces	1,50 pieces	2,00 pieces
	58111	Nonius adjusting strip	1,00	300	100 pieces	1,00 pieces	1,50 pieces	2,00 pieces
	58112	Nonius adjusting strip	1,00	400	100 pieces	1,00 pieces	1,50 pieces	2,00 pieces
	58113	Nonius adjusting strip	1,00	500	100 pieces	1,00 pieces	1,50 pieces	2,00 pieces
	58114	Nonius adjusting strip	1,00	600	100 pieces	1,00 pieces	1,50 pieces	2,00 pieces
	58115	Nonius adjusting strip	1,00	700	100 pieces	1,00 pieces	1,50 pieces	2,00 pieces
	58116	Nonius adjusting strip	1,00	800	100 pieces	1,00 pieces	1,50 pieces	2,00 pieces
	58117	Nonius adjusting strip	1,00	900	100 pieces	1,00 pieces	1,50 pieces	2,00 pieces
	58118	Nonius adjusting strip	1,00	1000	100 pieces	1,00 pieces	1,50 pieces	2,00 pieces
⑦	58122	U connection profile	0,60	3000	48 m			
	58121	Direct hanger (Adjustable range up to 125 mm)	0,90	125	100 pieces	1,00 pieces	1,50 pieces	2,00 pieces
	58150	Touch-up paint black			400 ml			
	59014	Hat profile	0,60	4000	40 m			

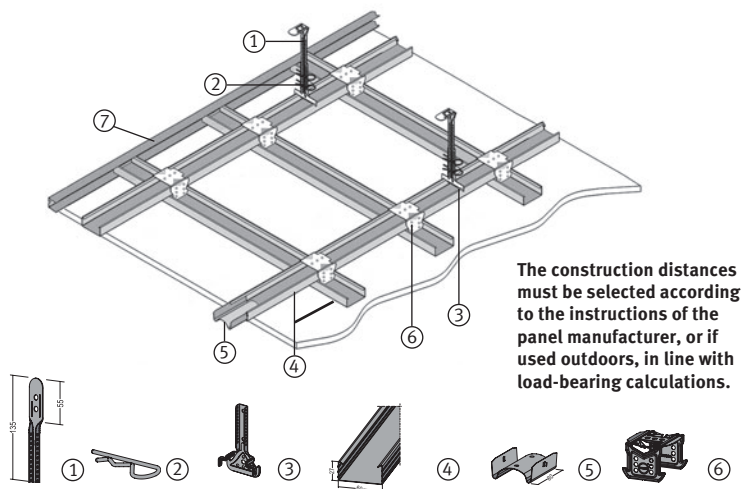
### Examples of use:

Outdoor areas, areas with a constant flow of air from outdoors, indoor riding arenas, cold stores, damp areas of indoor swimming pools, underground car parks, etc.

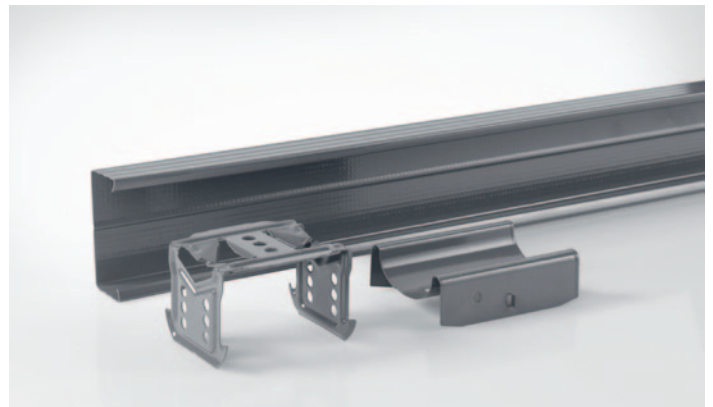
# CORROSION RESISTANT C5 CEILING SUB-STRUCTURES

## PD 310

for use in areas defined in DIN 13964 (Table 7 and 8, Class D) and DIN EN ISO 12944-6 corrosion category C5



Sub-structures with a C5 coating are suitable for use in indoor swimming pools with a chlorine-laden atmosphere, under constant attack from corrosive gases and/or de-icing salt. This high-quality anti-corrosion system can resist even heavy corrosive impacts over long periods. The material was subjected to an endurance test in fine salt spray for 1,440 hours (without any blisters forming or creep corrosion). The components were then subjected to a cross-cut test. The suitability of the C5 coating was confirmed by a test report from the FEM (Research Institute for Precious Metals and Metal Chemistry).



Number	Item Code	Description	Material thickness (mm)	Length (mm)	Packaging unit	Requirements per m <sup>2</sup> for ceiling weight		
						≤ 0,15 kN/m <sup>2</sup>	≤ 0,30 kN/m <sup>2</sup>	≤ 0,50 kN/m <sup>2</sup>
④	58130	C-ceiling profile / basic profile 60-06	0,60	4000	32 m	2,90 m	3,20 m	3,80 m
⑤	58131	Straight connector	0,60	110	100 pieces	0,60 pieces	0,75 pieces	0,80 pieces
⑥	58132	Quick cross-connector	0,80	64,5	100 pieces	1,75 pieces	2,30 pieces	3,30 pieces
②	58135	Nonius safety clamp	2,25	60	100 pieces	2,00 pieces	3,00 pieces	4,00 pieces
③	58136	Nonius hanger	1,25	122	100 pieces	1,00 pieces	1,50 pieces	2,00 pieces
①	58137	Nonius adjusting strip	1,00	135	100 pieces	1,00 pieces	1,50 pieces	2,00 pieces
	58138	Nonius adjusting strip	1,00	200	100 pieces	1,00 pieces	1,50 pieces	2,00 pieces
	58139	Nonius adjusting strip	1,00	300	100 pieces	1,00 pieces	1,50 pieces	2,00 pieces
	58140	Nonius adjusting strip	1,00	400	100 pieces	1,00 pieces	1,50 pieces	2,00 pieces
	58141	Nonius adjusting strip	1,00	500	100 pieces	1,00 pieces	1,50 pieces	2,00 pieces
	58142	Nonius adjusting strip	1,00	600	100 pieces	1,00 pieces	1,50 pieces	2,00 pieces
	58143	Nonius adjusting strip	1,00	700	100 pieces	1,00 pieces	1,50 pieces	2,00 pieces
	58144	Nonius adjusting strip	1,00	800	100 pieces	1,00 pieces	1,50 pieces	2,00 pieces
	58145	Nonius adjusting strip	1,00	900	100 pieces	1,00 pieces	1,50 pieces	2,00 pieces
	58146	Nonius adjusting strip	1,00	1000	100 pieces	1,00 pieces	1,50 pieces	2,00 pieces
⑦	58148	U connection profile	0,60	3000	48 m			
	58149	Direct hanger (Justierbereich bis 125mm)	0,90	125	100 pieces	1,00 pieces	1,50 pieces	2,00 pieces
	58151	Touch-up paint grey			400 ml			
		Hat profile on request						

### Examples of use:

Swimming pools, brine baths, treatment pools, chemical processing plants, cattle sheds, sewage treatment plants, composting plants, etc.

## CORROSION RESISTANT C3 WALL CONSTRUCTION

PW 800

according to DIN EN ISO 12944-6 corrosion category C3

Item Code	Description	Material Thickness (mm)	Length (mm)	Packaging unit
59011	CW 50	0,6	3000, 4000	8 pieces
59030	UW 50	0,6	4000	8 pieces
59019	UA 50	2,0	3000, 4000	4 pieces
59015	CW 75	0,6	3000, 4000	8 pieces
59033	UW 75	0,6	4000	8 pieces
59020	UA 75	2,0	3000, 4000	4 pieces
59016	CW 100	0,6	3000, 4000	8 pieces
59034	UW 100	0,6	4000	8 pieces
59021	UA 100	2,0	3000, 4000	4 pieces

### Examples of use:

Outdoor areas, areas with a constant flow of air from outdoors, indoor riding arenas, cold stores, damp areas of indoor swimming pools, underground car parks, etc.

## CORROSION RESISTANT C5 WALL CONSTRUCTION

PW 810

according to DIN EN ISO 12944-6 corrosion category C5

Item Code	Description	Material Thickness (mm)	Length (mm)	Packaging unit
59211	CW 50	0,6	3000, 4000	8 pieces
59230	UW 50	0,6	4000	8 pieces
59219	UA 50	2,0	3000, 4000	4 pieces
59215	CW 75	0,6	3000, 4000	8 pieces
59233	UW 75	0,6	4000	8 pieces
59220	UA 75	2,0	3000, 4000	4 pieces
59216	CW 100	0,6	3000, 4000	8 pieces
59234	UW 100	0,6	4000	8 pieces
59221	UA 100	2,0	3000, 4000	4 pieces

### Examples of use:

Swimming pools, brine baths, treatment pools, chemical processing plants, cattle sheds, sewage treatment plants, composting plants, etc.

### Standard texts for tenders

can be downloaded [www.protektor.com](http://www.protektor.com)



**PROFILES  
FOR MODERN  
BUILDING**

### PROTEKTOR UK Limited

Frederick Road, Hoo Farm Industrial Estate,  
Kidderminster, Worcestershire,  
England, DY11 7RA

Tel. +44 (0)1562 515200

Fax +44 (0)1562 515116

[www.protektor.co.uk](http://www.protektor.co.uk)

Version: 5 04/13 2 GZ 14033